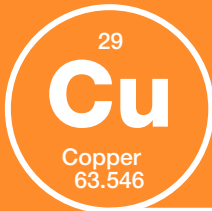




C L I F F O R D
C H A N C E

OUR MINING AND METALS PRACTICE
2022

OUR MINING AND METALS PRACTICE



Projects

**M&A and Joint
Ventures**

**Mining
Infrastructure**

**Commodity
Financing**

**Restructuring
and Insolvency**



**Disputes and
Arbitration**

Compliance

ESG

**Renewable
Energy**



Africa



**Asia
Pacific**



**Europe /
Middle East**



**Latin
America**



**Russia /
CIS**

A FULL SPECTRUM MINING PRACTICE

We have a truly global, cross-discipline team which advises on the full range of mining and metals-related transactions and issues (including disputes and regulatory investigations).

The quality of our team is recognised through our award-winning mandates and our long-standing client relationships. We have a global view and a detailed understanding of the sector, its drivers and competitive landscapes which makes us extremely well-placed to assist our mining and metals clients across the globe.

In addition to the core mining disciplines of project development, construction, financing, commodity trading, M&A and dispute resolution, Clifford Chance's mining team also includes market-leading sanctions, regulatory, ESG and compliance teams. In a world where cost-efficiency is key, our experience of advising on joint ventures, outsourcing and "big data" projects is also an important part of our offering.

JAMES PAY

Global Co-Head of Mining & Metals, London



T +44 20 7006 2625

M +44 79 0480 3419

E james.pay@cliffordchance.com

James is a project finance partner who focuses on mining project development and financing, joint ventures and metals offtake and logistics contracts. He works for a range of private equity companies, mining companies and their lenders. He has been involved in high-profile mining transactions in Africa, the Middle East and Europe and has significant experience of negotiating concessions and mining infrastructure agreements with host governments in West Africa. James is interested in developing flexible energy solutions for the mining sector.

SIMON GREENBERG

Global Co-Head of Mining & Metals, Paris



T +33 1 4405 5114

M +33 6147 68395

E simon.greenberg@cliffordchance.com

Simon is an international arbitration partner with a focus on energy, mining and metals disputes. His recent matters include disputes concerning pricing review and volume commitments under very long-term offtake agreements, mining rights revoked or revised by local authorities (particularly in Africa), legal stabilisation regulations, and mining investments, concerning high grade iron ores and pellet feeds, coal, lithium, copper and cobalt. Simon has published two books and more than 30 articles relating to international arbitration, was Deputy Secretary General of the ICC International Court of Arbitration 2008-2012 and an ICC Court Member 2012-2018. He is fluent and works in both English and French.

NICOLAS COOKSON

Global Co-Head of Mining & Metals, Dusseldorf



T +49 211 4355 5247

M +49 1716241385

E nicolas.cookson@cliffordchance.com

Nicolas is a project finance counsel who focuses on mining projects and infrastructure development, investment and financing work for a range of mining companies, trading houses and banks. He has been involved in transactions across South America, Africa and Europe whilst based out of London, Paris, Casablanca, Tokyo and Germany. Nicolas is an English Solicitor and French avocat and is fluent in both English and French. He has been closely following the energy transition and its impacts on the mining sector and mining sector players.

MINING AND METALS PROJECT DEVELOPMENT AND FINANCING

We have a global projects practice that specialises in greenfield project development and asset and offtake financings. We have a strong track record of advising on the procurement and financing of complicated, integrated projects and related infrastructure development in the natural resources sector. Our recent experience of mining and metals project development and financing includes:

- **Guinea Alumina:** advising the lenders in relation to the US\$3.5 billion project financing of the Guinea Alumina project, including integrated mine, refinery and port infrastructure.
- **Katanga Mining:** advising this DRC miner on the development and financing of the latest phase of this copper-cobalt project.
- **Vale:** advising in relation to all aspects of the development of the infrastructure solution to export iron ore from Simandou in Guinea via Liberia.
- **BHP:** advising in relation to the development of the Australian polymetallic copper-uranium Olympic Dam Project in South Australia.
- **PT Weda Bay Nickel:** advising the project company on the development and US\$3 billion financing of this world class nickel-cobalt mine and processing plant in Indonesia.
- **Antofagasta:** advising the copper producer on the financing and development of the Los Pelambres copper mine in Chile.
- **Escondida:** advising JBIC on the financing of the Escondida copper mine in Chile.
- **Aluminium Project:** advising lenders to the world's largest integrated aluminium complex (smelter, cast-house and rolling mill) in Saudi Arabia.
- **Ma'aden Phosphate Company:** advising lenders in relation to the development of an integrated phosphate project including related processing plant and infrastructure.
- **Ukraine Steel:** advising EBRD on the financing of the modernisation and environmental upgrade project for Ukraine's largest steel mill.
- **Udokan:** advising Baikal Mining Company on the equipment supply, technology and construction contracts relating to the development of the world's third largest copper deposit in the Russian Federation.

JAMES PAY
Global Co-Head of Mining
& Metals, London

T +44 20 7006 1903
E james.pay@cliffordchance.com



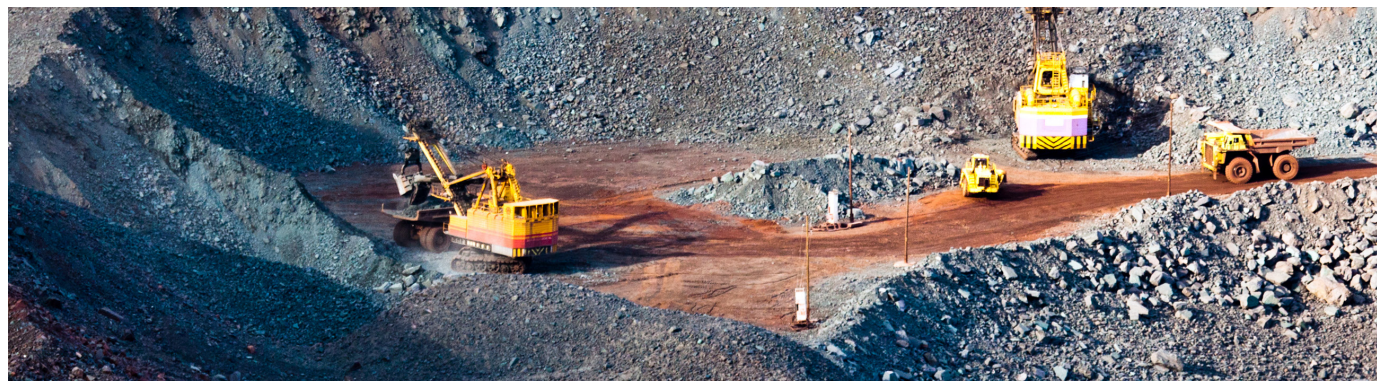
NIKOLAÏ EATWELL
Partner, Paris

T +33 1 4405 5339
E nikolai.eatwell@cliffordchance.com



RUSSELL WELLS
Partner, London

T +44 207006 2628
E russell.wells@cliffordchance.com



M&A AND JOINT VENTURES

Our experience of M&A and joint ventures includes:

- **Kingspan:** advising Kingspan on signing an agreement to acquire the Steel division of TeraPlast Group.
- **Goldman Sachs Asset Management:** advising on its acquisition of the sponsorship of Perth Mint Physical Gold ETF (AAAU), which will expand its US\$19 billion Exchange-Traded Fund (ETF) platform.
- **Mubadala Investment Company and Trafigura:** advising on the US\$1.865bn sale of Minas De Aguas Tenidas SA to Sandfire Resources.
- **Sibanye-Stillwater:** advising the multinational precious metals company on the proposed acquisition of Eramet Sandouville SAS from the Eramet group.
- **Sibanye-Stillwater:** advising on its acquisition of mining companies Mineração Vale Verde and Atlantic Nickel from Appian Capital for US\$1 billion.
- **British Steel:** advising the Official Receiver and Special Managers on the sale of British Steel to Jingye Iron & Steel.
- **Eramet:** advising the French multinational mining and metallurgy company on the sale of an interest in Weda Bay Nickel to Tsingshan Steel.
- **Eramet:** advising the French multinational mining and metallurgical group on the sale of TiZir Titanium & Iron AS.
- **Nova Resources B.V:** advising the company owned and controlled by a consortium of investors on its £4bn take private offer for KAZ Minerals PLC.
- **Cristal:** advising the titanium dioxide producer on the completion of its cross-border sale to Tronox.
- **Russian Platinum:** advising one of the leading Platinum Group Metal producers in the world on its joint venture with Norilsk Nickel.
- **Mitsubishi:** advising Japan's largest trading company on its US\$5.4 billion acquisition from Anglo American of a 24.5% stake in Anglo American Sur, and its subsequent disposal of 4.06% of this stake to Codelco and Mitsui.
- **Antofagasta:** advising the Chile-based mining group on its US\$1 billion acquisition of 50% of the Zaldivar copper mine from Barrick Gold.
- **Aluminum Corporation of China (Chinalco):** advising the state-owned enterprise on the proposed acquisition of the US\$5.85 billion Las Bambas copper mine project in Peru.
- **Pala Investment:** advising the investment company on its proposed acquisition of a 50% interest (via equity and debt) in two Spanish tungsten mines.
- **Arvedi:** advising Arvedi in a competitive auction process for the acquisition of Thyssenkrupp's ATS stainless steel plant in Italy.

THAIS GARCIA
Partner, New York

T +1 212 878 8497
E thais.garcia@cliffordchance.com



MELISSA NG
Partner, Singapore

T +65 6410 2254
E melissa.ng@cliffordchance.com



NICOLAS COOKSON
Counsel, Dusseldorf

T +49 211 4355 5247
E nicolas.cookson@cliffordchance.com



MINING AND METALS INFRASTRUCTURE

Our experience of advising clients in relation to mining and metals infrastructure includes:

- **North West Infrastructure:** advising NWI in relation to the development of a new 50 million tonne per annum iron ore export port in Western Australia.
- **Impala Terminals:** advising a private equity group in relation to the purchase of a major interest in the global Impala Terminals business including related polymetallic throughput contracts.
- **Simandou:** advising Vale in relation to the development of the rail and deep water port infrastructure solution for iron ore exports from Guinea via Liberia, including the negotiation of associated concession agreements with host governments.
- **PT Kereta Api Borneo:** advising the project company on the development of a 190km railway and associated coal export terminal in Indonesia.
- **Colombian Nickel:** advising the lenders to the financing of an infrastructure and smelter upgrade project for Cerro Matoso S.A.
- **Vessel Financing:** advising the lenders on a wide range of vessel financings including K-Sure backed financing of multiple Capesize and Valemax (VLOC) vessels for Vale.
- **Uralkali:** advising on the acquisition of a stake in a port terminal in Antonina, Brazil to be used for bulk potash exports.
- **Port modernisation:** advising the Far East Development Fund on the financing of a coal conveyer and export port modernisation project.
- **Eramet:** advising the developers in relation to the Weda Bay Nickel project, including in relation to the related processing plant road, airport and export port infrastructure.
- **Al Taweelah Alumina Refinery:** advising Emirates Global Aluminium on the process technology and construction contracts relating to the development of the 2 million tpa refinery in the UAE.

ANTHONY GIUSTINI
Partner, Paris

T +33 1 4405 5926
E anthony.giustini@cliffordchance.com



JEREMY CONNICK
Partner, London

T +44 20 7006 4237
E jeremy.connick@cliffordchance.com



OLAMIDE OLADOSU
Partner, London

T +44 207006 2016
E olamide.oladosu@cliffordchance.com



COMMODITY FINANCING AND OFFTAKE

We have a global commodity financing practice that advises producers, trading companies and lenders across a full spectrum of resources. Our recent experience includes:

- **Bahrain Steel:** advising the direct reduction grade iron ore pellet producer on its 20 year, US\$15 billion purchase of pellet feed supply from Anglo American's Minas-Rio mine in Brazil.
- **Glencore:** advising a syndicate led by National Australia Bank on a US\$560 million syndicated cross-border base metal borrowing for Glencore.
- **Nyrstar:** advising a coordinating committee led by Deutsche Bank in relation to the restructure of the Nyrstar Group, including new international cross border multi-commodity backed facilities.
- **Gold Corporation:** advising Gold Corporation of Western Australia in relation to precious metal leasing facilities and storage arrangements for various central banks.
- **Trafigura:** advising a syndicate led by ING Bank in relation to a US\$1.8 billion uncommitted cross-border secured metal concentrates borrowing base facility for Trafigura.
- **Fortescue Metals Group:** advising a syndicate of banks led by Deutsche Banks and ING in relation to a US\$890 million iron ore prepaid offtake agreement by Glencore.
- **Polyus Gold:** advising the arrangers on a US\$3.6 billion margin loan acquisition facility in connection with the sale by Onexim Group of its stake in Polyus Gold International, Russia's leading gold producer.
- **Volcan Peru:** advising the arrangers on a US\$90 million secured cross-border aluminium and zinc financing for Volcan Peru SA (winner of Trade Finance magazine's trade deal of the year).
- **Tenaga:** advising the arrangers on US\$120 million Islamic murabaha PXF facility for Tenaga (for the import purchase of copper).
- **Metal Portfolio Financing:** advising a leading trading house on a US\$500 million medium term funding of its metals portfolio by way of a securitised note issuance secured on metal(s) inventory subject to repurchase agreements.
- **Metal Streaming and Royalty Facilities:** advising a number of lenders and corporates in relation to the structuring and commercial terms of streaming and royalty agreements in the mining sector.

LEONARD CLELAND
Partner, London

T +44 20 7006 2070
E leonard.cleland@cliffordchance.com



PAUL LANDLESS
Partner, Singapore

T +65 6410 2235
E paul.landless@cliffordchance.com



MARK GILLGREN
Partner, Perth

T +61 8 9262 5543
E mark.gillgren@cliffordchance.com



RESTRUCTURING AND INSOLVENCY

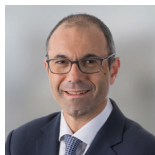
Our leading international restructuring and insolvency team supports clients in relation to financially stressed situations across the entire credit spectrum, ranging from challenging refinancings to non-consensual enforcement.

Our recent experience includes advising:

- **GFG:** advising GFG in relation to the implications of the collapse of Greensill Bank on their steel production facilities in the Czech Republic, Belgium and Romania and related financing issues..
- **Nyrstar:** advising the coordinating committee of lenders in relation to the restructuring of Nyrstar.
- **RUSAL Group:** advising the coordinating committee of lenders in relation to the amendment and restructuring of facilities made available to the RUSAL Group, a Russian metals and minerals producer, which has total indebtedness of approximately US\$15 billion.
- **British Steel:** advising the Official Receiver and Special Managers of British Steel on all aspects of British Steel's liquidation, including the proposed sale of the business and assets to Jingye Iron & Steel.
- **Mongolian Mining:** advising BNPP, Industrial and Commercial Bank of China Limited and ICBC (London) plc in relation to their exposure to Mongolian Mining Corporation (a Cayman Islands company listed in Hong Kong) in Mongolia.
- **Bumi Resources:** advising two lender syndicates on exposure to PT Bumi Resources Tbk, the Indonesian coal mining company, and on the proposed (ongoing) restructuring of Bumi's indebtedness of US\$4 billion. This is one of the largest and most high-profile Asian restructurings of recent years.
- **Donetsksteel:** advising the syndicate of lenders with respect to the circa US\$1 billion debt restructuring of Donetsksteel – Iron and Steel Works, Ukraine's largest producer of hard coking coal.
- **Noble:** advising a financial institution in connection with its role as a senior creditor and new trade finance provider to Noble Group in relation to a complex, cross-border restructuring.
- **Celsa UK:** advising the lenders to Celsa UK on its restructuring/refinancing.
- **MetInvest:** advising the coordinating committee representing 26 banks in connection with the circa US\$3 billion debt restructuring for MetInvest.
- **Samarco Mineração:** advising Samarco Mineração S.A. (one of the largest producers of iron pellets in the world) in connection with the potential restructuring of approximately US\$4 billion of debt.

PHILIP HERTZ
Global Head of
Restructuring, London

T +44 20 7006 1666
E philip.hertz@cliffordchance.com



SCOTT BACHE
Partner, Hong Kong

T +852 2826 3493
E scott.bache@cliffordchance.com



IAIN WHITE
Partner, London

T +44 20 7006 2825
E iain.white@cliffordchance.com



GLOBAL DISPUTE MANAGEMENT AND INTERNATIONAL ARBITRATION

Our global mining arbitration practice supports mining firms and other stakeholders with expert dispute avoidance and dispute resolution advice wherever in the world they operate. The team represents parties in investment treaty and contractual arbitrations before all of the major international arbitral institutions. The world renowned arbitration team capitalises on the strength of our firm's broader mining practice. Our recent experience includes advising:

- **Mining investment company:** advising a mining investment company in a pending ICC arbitration and potential parallel treaty claim against an African state authority arising from the latter's breach of a resource exploitation joint venture agreement and the African State's purported revocation of an exploitation permit.
- **Major global mining company:** advising a major global mining company concerning a potential ICSID arbitration arising from the breach by an African state of stabilisation provisions in a mining code. Claims are at least several billion dollars.
- **Middle Eastern steel company:** representing a Middle Eastern steel company in a major LCIA arbitration concerning price review and disputes over volume commitments in a 20-year offtake contract for high grade iron ores. The total claim value is estimated at over US\$ 6 billion.
- **Cortec Mining v Kenya (ICSID Case No. ARB/15/29):** representing the investor in a major pending bilateral investment treaty dispute concerning the revocation of a mining licence for Mrima Hill, near Mombasa. Mrima Hill is home to the third largest undeveloped rare earth deposit in the world and is an asset of strategic significance to Kenya.
- **Tantalum International v Egypt (ICSID Case No. ARB/18/22):** representing a mining company in ICSID arbitration concerning measures taken by Egypt against Tantalum's investments in a tantalum, niobium, feldspar, quartz and alluvial tin mining project. ICSID claim under a bilateral investment treaty.

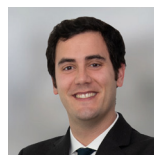
SIMON GREENBERG
Global Co-Head of Mining
& Metals, Paris

T +33 1 4405 5114
E simon.greenberg@cliffordchance.com



JOSÉ GARCÍA CUETO
Counsel, Washington D.C.

T +1 202 912 5123
E jose.garciacueto@cliffordchance.com



SAM LUTTRELL
Partner, Perth

T +61 8 9262 5564
E sam.luttrell@cliffordchance.com



RISK, COMPLIANCE AND INVESTIGATIONS

Our recent compliance experience includes:

- **Large mining company:** representing on a range of advisory work, including preparation of a global anti-bribery programme and advice relating to a joint venture and retention of business consultants in Asia Pacific.
- **International commodities trading:** assisting in conducting an internal investigation into a possible breach of compliance in security matters surrounding the death of an intruder on their site.
- **International producer and marketer of commodities:** conducting an investigation into a whistleblowing report alleging potential price collusion between competitors during a tender.
- **International commodities trading company:** conducting a review of Australian whistleblowing legislation, and assisting with drafting a new global whistleblowing policy.
- **International commodities trading company:** conducting an investigation into a series of whistleblowing reports relating to the arrest and detention of an expat employee by the African authorities.
- **International producer and marketer of commodities:** conducting an independent investigation in relation to an incident that occurred at a Latin American operation, involving conflict between local community members and personnel working at the operation.
- **International commodities trading company:** conducting an investigation in respect of potential breaches of company policies and procedures regarding third party payments, petty cash and expenses for the Colombian trading office.
- **International commodities trading company:** advising on an investigation into whistleblowing reports relating to the arrest and detention of an expat employee by the authorities, and allegations of bribery and anti-competitive behavior.
- **International producer and marketer of commodities:** advising in a high-profile criminal investigation commenced by a Chinese local Customs official for alleged smuggling of solid waste.

LUKE TOLAINI
Partner, London

T +44 20 7006 4666
E luke.tolaini@cliffordchance.com



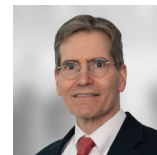
SHARIS POZEN
Partner, Washington D.C.

T +1 202 912 5226
E sharis.pozen@cliffordchance.com



GEORGE KLEINFELD
Partner, Washington D.C.

T +1 202 912 5126
E george.kleinfeld@cliffordchance.com



ESG – SUSTAINABILITY IN THE MINING & METALS SECTOR

Our relevant experience includes advisory, transactional, risk management and dispute resolution mandates across the full range of Environmental, Social and Governance issues and all stages of a business' lifecycle.

- **Extractives sector company:** advising on multiple issues concerning implementation of its sustainable business policies, including with respect to operations in challenging jurisdictions with weak governance, conflict or community unrest, and security and human rights issues.
- **Major energy supply company:** advising on questions of human rights and climate change.
- **Multiple extractive sector clients:** advising on M&A, project and investment due diligence assessing human rights risks including Indigenous Peoples' rights, land acquisition and use, access to and exploitation of natural resources. Advising on transparency and reporting/disclosure and on responsible divestment strategy.
- **The Government of the Republic of Zambia:** advising on the drafting of provisions of the Government and Privatisation (Amendment) Bill allocating environmental responsibility and risk in relation to Zambian Copper Mines.

CLARE BURGESS
Partner, London

T +44 20 7006 1727
E clare.burgess@cliffordchance.com



RAE LINDSAY
Partner, London

T +44 20 7006 8622
E rae.lindsay@cliffordchance.com

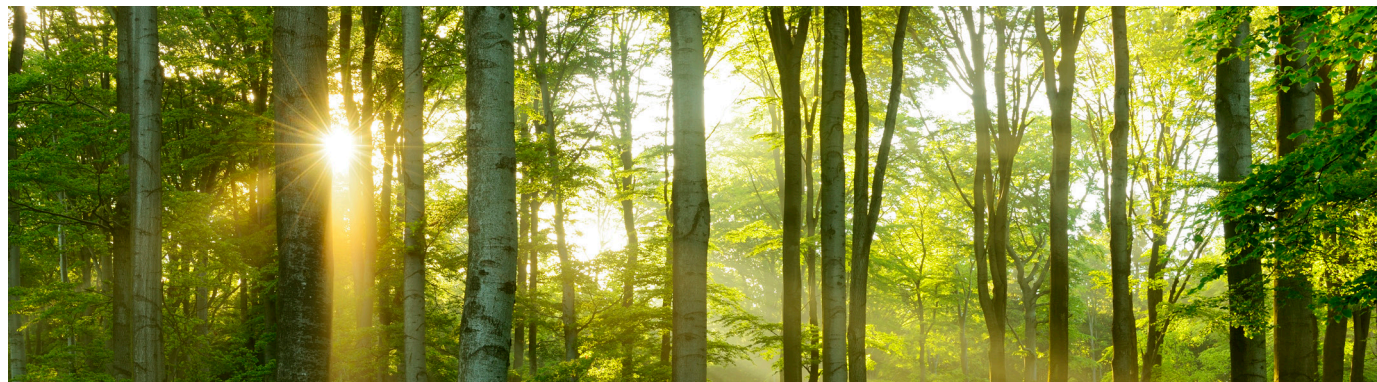


JESSICA GLADSTONE
Partner, London

T +44 20 7006 5953
E jessica.gladstone@cliffordchance.com



- **CDX Gas:** advising on the regulatory framework and the environmental consents required for a coal bed methane project in the UK.
- **Financial institution:** advising on the application of EU REACH chemicals legislation to trading in certain metals.
- **Multinational extractive and manufacturing company:** advising on the design and implementation of a human rights impact assessment aimed at assessing the conformity with the UN Guiding Principles on Business and Human Rights and other relevant international standards.
- **Mining company:** advising on the design and implementation of supply chain diligence processes taking account of OECD guidance and other international standards; developing contractual frameworks for modern slavery, labour and other human rights risks; advising on artisanal mining and child labour issues and on conflict minerals.
- **Brazilian Green Bond:** advising on green bonds where the proceeds of the bonds will be used for eligible projects that drive sustainable forest management, clean transportation and energy efficiency.
- **Royal Dutch Shell:** advising on US \$10 billion sustainable facility, with interest and fees on the facility linked to Shell's progress towards reaching its Net Carbon Footprint intensity target.



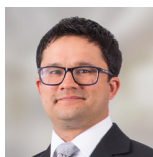
MINING, METALS AND RENEWABLE ENERGY

We have a market-leading global renewable power practice and increasingly are advising power suppliers and mining clients in relation to the development of renewable energy solutions for the mining and metals sectors, including:

- **Chichester Power Project:** advising the power company on this landmark energy project which will integrate an existing dual-fuel power station, a 30MW battery and a new 60MW PV plant – a world first solar-battery-gas hybrid – with Fortescue Metals Group as the power offtaker.
- **Sierra Leone:** advising the developer of a major hydro-electric power project in relation to power supply to iron ore projects.
- **Corporate PPAs:** advising a major green power generator in relation to corporate PPA structures and standard contract terms for both synthetic and physical renewable power purchase agreements.
- **Vale:** advising the iron ore major in relation to the redevelopment and expansion of a hydro-electric power project in Liberia in connection with iron ore exports through that country.
- **Australian off-grid solutions:** advising Western Power on off-grid integrated solar, battery and diesel stand-alone power systems.
- **Alinta Energy:** advising the renewable generator in relation to power offtake disputes with the Roy Hill iron ore mine.
- **Sovereign Wealth Fund:** advising the fund on fundraising for investment in clean energy projects and sustainable resource production.
- **Norsk Hydro:** advising the lenders to a 650MW Swedish wind farm with a Norsk Hydro aluminium smelter corporate PPA.
- **Battery Metals:** advising a major metals producer on a joint venture to develop a large scale battery metals refinery in Indonesia

PHILIP SEALEY
Director, Head of
Renewables, Perth

T +61 8 9262 5542
E philip.sealey@
cliffordchance.com



**DELPHINE SIINO
COURTIN**
Partner, Paris

T +33 1 4405 5236
E delphine.siinocourtin@
cliffordchance.com



RICHARD PARRIS
Partner, Abu Dhabi

T +971 2613 2374
E richard.parris@
cliffordchance.com



OTHER MINING AND METALS KEY CONTACTS



Casablanca
Mustapha Mourahib
Managing Partner
Finance
 T: +212 52264 4310
 E: mustapha.mourahib@cliffordchance.com

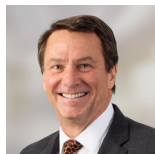


Dubai
Edmund Boyo
Partner
Banking & Finance
 T: +971 4503 2614
 E: edmund.boyo@cliffordchance.com



Dubai
Adesegun Olugbade
Counsel
Banking & Finance
 T: +971 4503 2732
 E: adesegun.akin-olugbade@cliffordchance.com

Americas



**North America/
 Latin America**
David Brinton
Partner
Corporate/M&A
 T: +1 212 878 8276
 E: david.brinton@cliffordchance.com



Washington DC
Fabricio Longhin
Partner
 T: +1 202 912 5015
 E: fabricio.longhin@cliffordchance.com



Munich
Jared Grubb
Partner
Banking & Finance
 T: +90 212339 0 007
 E: jared.grubb@cliffordchance.com



London
Sandy Hall
Partner
 T: +44 20 7006 6806
 E: sandy.hall@cliffordchance.com



London
Keith Hauck
Senior Associate
 T: +44 207006 1252
 E: keith.hauck@cliffordchance.com



Moscow (CIS)
Victoria Bortkevicha
Partner
Projects
 T: +7 495 725 6406
 E: victoria.bortkevicha@cliffordchance.com

UAE



Mo Al-Shukairy
Regional Managing
Partner, Middle East
Corporate/M&A
 T: +971 4503 2707
 E: mo.al-shukairy@cliffordchance.com



Abu Dhabi
Jason Mendens
Partner
Corporate/M&A
 T: +971 2613 2467
 E: jason.mendens@cliffordchance.com

Asia Pacific



Perth
Ben Luscombe
Partner
International Disputes
 T: +61 8 9262 5511
 E: ben.luscombe@cliffordchance.com



Sydney
Dave Poddar
Partner
Competition/Antitrust
 T: +61 2 8922 8033
 E: dave.poddar@cliffordchance.com



Singapore
Ross Howard
Partner
Projects
 T: +65 6410 1312
 E: ross.howard@cliffordchance.com



Singapore
Nicholas Wong
Partner
Co-head Worldwide
Projects Group
 T: +65 6410 2218
 E: nicholas.wong@cliffordchance.com



Hong Kong
Maggie Lo
Partner
Finance
 T: +86 10 6535 2212
 E: maggie.lo@cliffordchance.com



Beijing
Terence Foo
Co-Managing Partner
Corporate/M&A
 T: +86 10 6535 2299
 E: terence.foo@cliffordchance.com



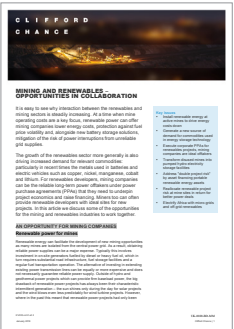
Tokyo
Hans Menski
Partner
Banking & Finance
 T: +81 3 6632 6669
 E: hans.menski@cliffordchance.com

PUBLICATIONS

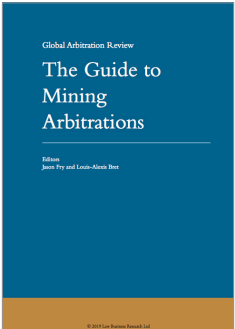
We produce a wide range of publications and client briefings in relation to the mining and metals sectors. These are available via our intranet page or contact us if you wish to receive a hard copy.



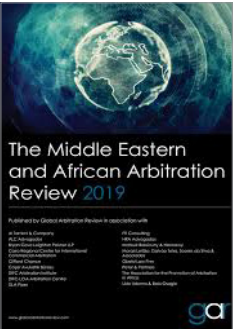
Climate Change and the Pressure on Coal – Latest developments



Mining and Renewables – Opportunities in Collaboration
Client Briefing Note



The Guide to Mining Arbitrations (Global Arbitration Review, 2019). Edited by Clifford Chance



Mining Arbitrations in Africa (The Middle Eastern and African Arbitration Review, 2019)

CLIFFORD CHANCE

Clifford Chance, 10 Upper Bank Street, London, E14 5JJ

© Clifford Chance 2022

Clifford Chance LLP is a limited liability partnership registered in England and Wales under number OC323571.

Registered office: 10 Upper Bank Street, London, E14 5JJ

We use the word 'partner' to refer to a member of Clifford Chance LLP, or an employee or consultant with equivalent standing and qualifications.

WWW.CLIFFORDCHANCE.COM



RECYCLED
paper made from
recycled material

FSC® C012830